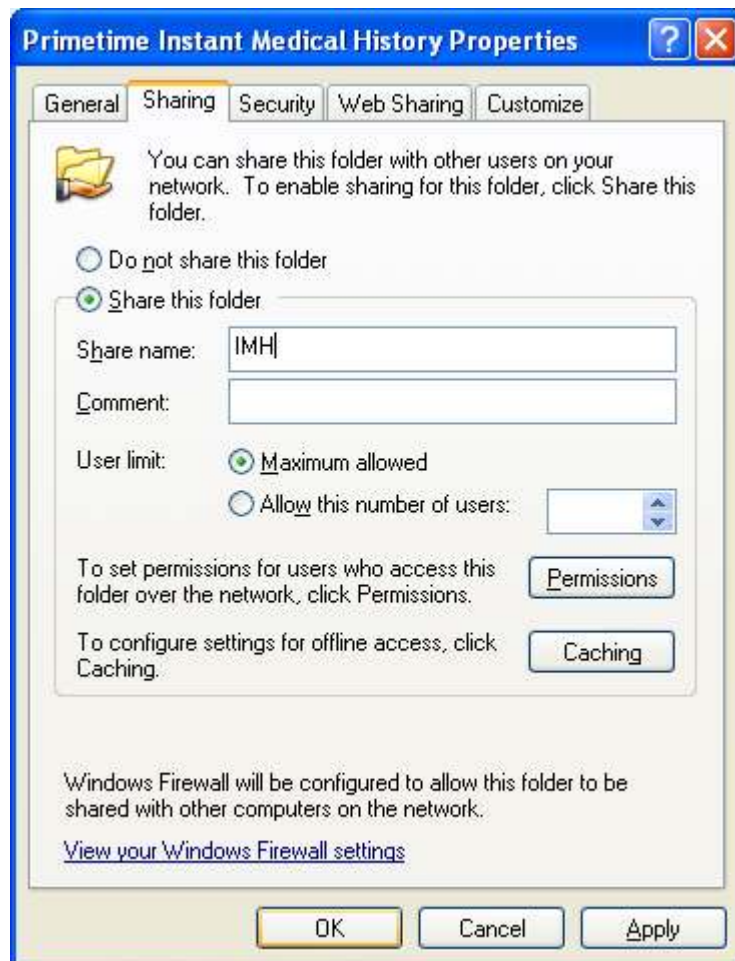


How do I install IMH on a server?

This is very broad question that should only be attempted with a full understanding of Windows, Network, and Security settings. We have provided an overview of the process as a guidelines.

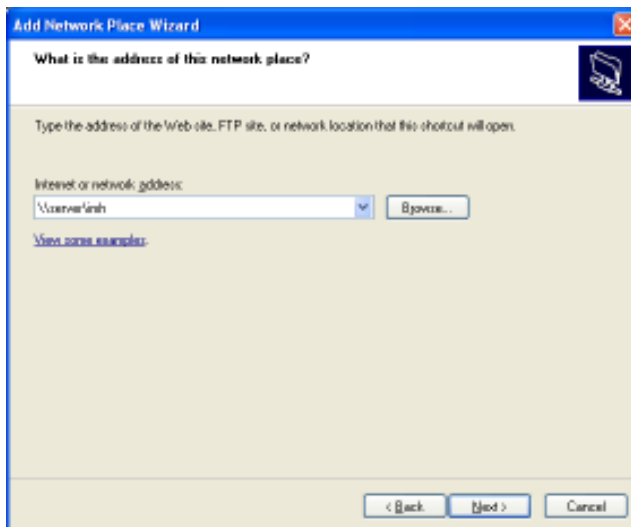
Step 1

Install Instant Medical History on the server. Proceed to open the C:\ directory to the Program Files folder. Find the Primetime Medical Software\Primetime Instant Medical History folder. Right click that folder, and select the Sharing tab and Share the folder. Be sure to name the share. You will want to share all folders and sub-folders.



Step2

Proceed to an Exam Room workstation and use Network Places, Add a Network Place to locate the IMH.exe on the Server.



and then create a desktop shortcut to the program on the workstation. Be sure to create a password for your Instant Medical History and follow other security best practices.



Step 3

In your Tools | Options | Report Preview and EMR tabs, be sure to adjust the Report Output Location for the server folder, so that the output is not written to the C:\ drive of the workstation.

