



INSTANT MEDICAL HISTORY

2009 Release Notes

Enclosed is your CD to update Instant Medical History. Please install by clicking “IMHSetup.exe” on the CD, and following the prompts to upgrade your program. Your preferences and settings will not be changed. We will briefly describe new features in the following sections, and invite you to web training to learn more.

New Questionnaires

New Content Releases

Many questionnaires have been redesigned to differentiate between new visits and follow-up visits. For chronic diseases, the questionnaires for “diabetes follow-up”, “high blood pressure follow-up”, and “asthma follow-up” have been revised for the 2009 guidelines.

There are also several screening questionnaires that meet the criteria for CPT code 96103. If your clinic isn’t currently being reimbursed for psychological screenings, please contact us for more details.

The Spanish version has been updated to include almost all questionnaires.

Also, new questionnaires are available for:

- Androgen Deficiency
- Screener and Opioid Assessment for Patients in Pain
- Asthma Control Test
- Wells Score for Deep Venous Thrombosis
- Beta Blocker Pre-Op Assessment Tools
- Flank Pain
- International Travel
- Functional Health Status
- Adolescent Sports Exam
- Pediatric Symptom Checklist – Youth Version
- Activities of Daily Vision Scale

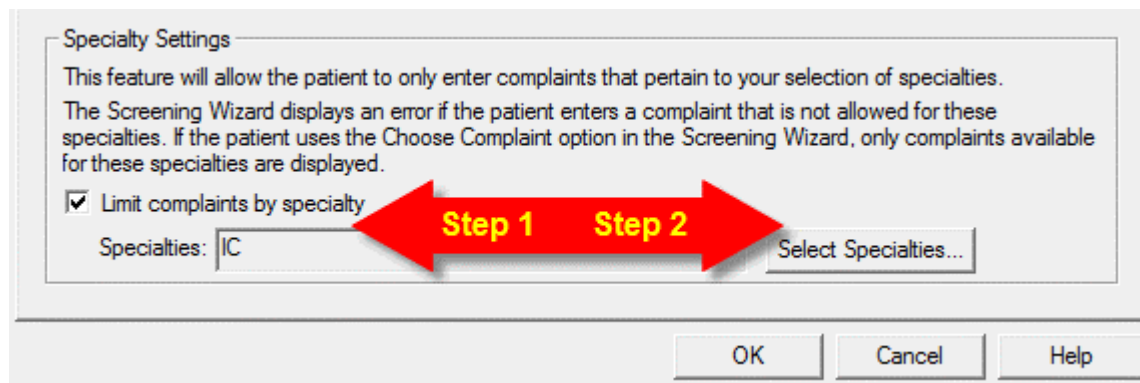
New Features

There are a few new enhancements. Please e-mail support@medicalhistory.com if you have questions about these Instant Medical History options.

Set Specialty

The feature allows you to set a specialty (Figure 1). Setting the specialty assists Instant Medical History in choosing an appropriate interview for a patient, and the menu will adapt to that specialty. For example, “Family Practice” would be useful to remove surgical questionnaires from the menu.

Figure 1



This setting will also “stop” a patient from entering an inappropriate reason for visit for your practice

Health Risk Assessment

A special new “health risk assessment” questionnaire has been created. This tool is designed for use as part of an annual physical or new patient assessment. In addition to the normal Instant Medical History report, special Health Risk Assessment factors will be included when enabled in the Report Preview option (Figure 2).

Figure 2

Diabetes - Average

Diabetes \ Family - 1

Diabetes \ Self - 0

Obesity \ Family - 1

Obesity \ Self (modifiable) - 0

Customizing Your Web Version

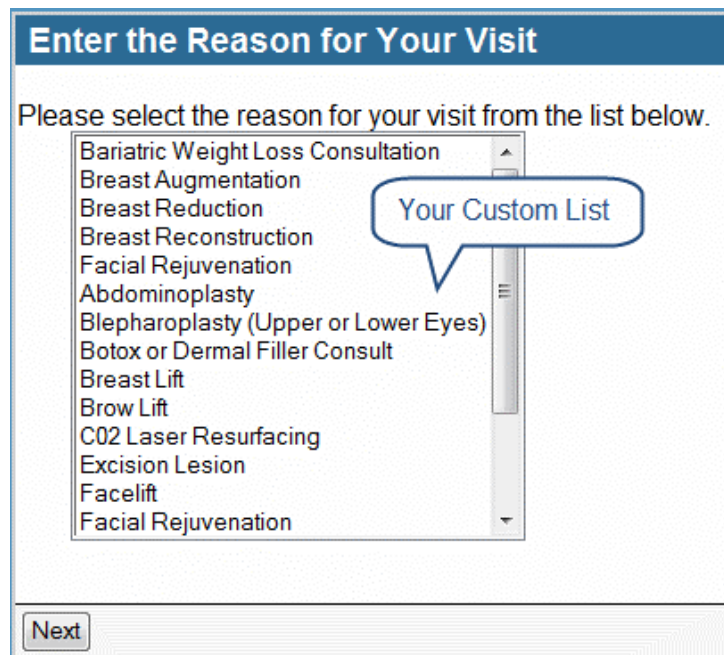
You can now personalize your web version. The first new option is to write your own welcome/instruction message. Also, your clinic logo can be placed at the top to brand the questionnaire (Figure 3). The free text box where the patient can type their reason for visit is also optional. If you wish to personalize the web version or restrict the web questionnaires to a selected list (Figure 4), please contact us.

Figure 3



The screenshot shows the top of a web page with a red arrow pointing to a logo area labeled "Your Logo". To the right, the text reads "THE CAROLINA CLINIC AT UNC" and "For Executive Wellness". Below this is a blue header for the form titled "Enter the Reason for Your Visit". The form contains the instruction "Please select the reason for your visit from the list below." followed by a dropdown menu with the following options: "Adult Physical Exam", "Pre-Operative Checkup", "Pediatric Well Visit Checkup", "Adolescent Exam", "Sports Physical", and "Backache". Below the dropdown is a text input field with the label "Optional Free Text of Reason for Visit" and the instruction "OR enter the reason for your visit." Below the text field is a small example "(e.g., cough, headache, chest pain, depression)" and a "Help" link. At the bottom left of the form is a "Next" button.

Figure 4

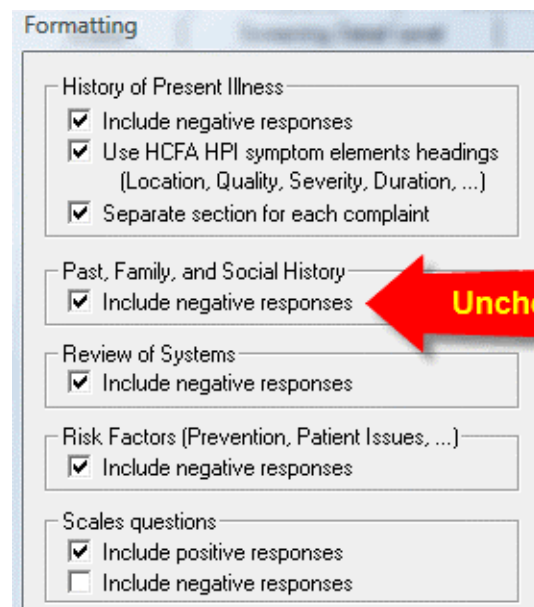


The screenshot shows the same "Enter the Reason for Your Visit" form. The dropdown menu is expanded, showing a custom list of reasons for visit: "Bariatric Weight Loss Consultation", "Breast Augmentation", "Breast Reduction", "Breast Reconstruction", "Facial Rejuvenation", "Abdominoplasty", "Blepharoplasty (Upper or Lower Eyes)", "Botox or Dermal Filler Consult", "Breast Lift", "Brow Lift", "CO2 Laser Resurfacing", "Excision Lesion", "Facelift", and "Facial Rejuvenation". A callout box labeled "Your Custom List" points to the dropdown menu. At the bottom left of the form is a "Next" button.

Shortening the Report

Another option in Instant Medical History is to Remove the Negatives from the report (Figure 5). This can be done for the report that is sent to the EMR, the report previewed in Instant Medical History, or both. If this option is disabled (no check mark in the box to the left of the description), then the negative answers to questions in the History of Present Illness, Past/Family/Social History, or Review of Systems category will be suppressed from the output. Disabling negative responses may be useful for reviewing the output with the patient before finalizing the output for the chart. This allows you to focus on the positive findings that are more useful for the diagnosis and care plan. The chart should eventually contain all of the positive and negative responses for billing and legal purposes. This option is accessed under Tools, Options, then either EMR or Report Preview. From here, please choose Formatting to access this option.

Figure 5



Formatting

History of Present Illness

- Include negative responses
- Use HCFA HPI symptom elements headings (Location, Quality, Severity, Duration, ...)
- Separate section for each complaint

Past, Family, and Social History

- Include negative responses

Review of Systems

- Include negative responses

Risk Factors (Prevention, Patient Issues, ...)

- Include negative responses

Scales questions

- Include positive responses
- Include negative responses

Free Training

We are scheduling web tutorials to introduce these new options and discuss patient scheduling and physician workflow. A full schedule is at

http://www.medicalhistory.com/usertools/training_classes.asp

Please telephone us at 803-796-7980 or send an e-mail to support@medicalhistory.com if we can be of assistance to you. We appreciate your comments and feedback as an important source of improving Instant Medical History, and thank you in advance for suggestions.