

Instant Medical History / eMedReceiver Automatically Starting with the Computer

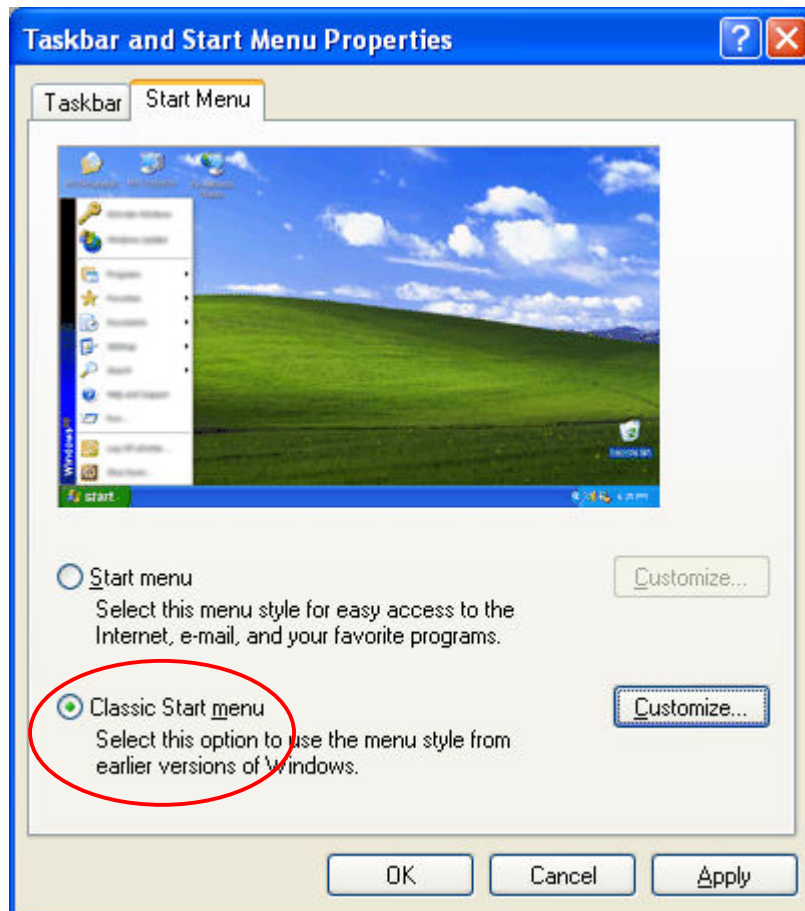
The following directions will enable you to launch eMedReceiver automatically upon powering up your computer. The drive letters, such as c:\, are representative and may need to be changed for your individual computer.

The first step is to locate your Start Up folder. The easiest way to do this is to select the Windows button “Start “ and then choose Control Panel. In the Control Panel, please choose Taskbar and Start Menu

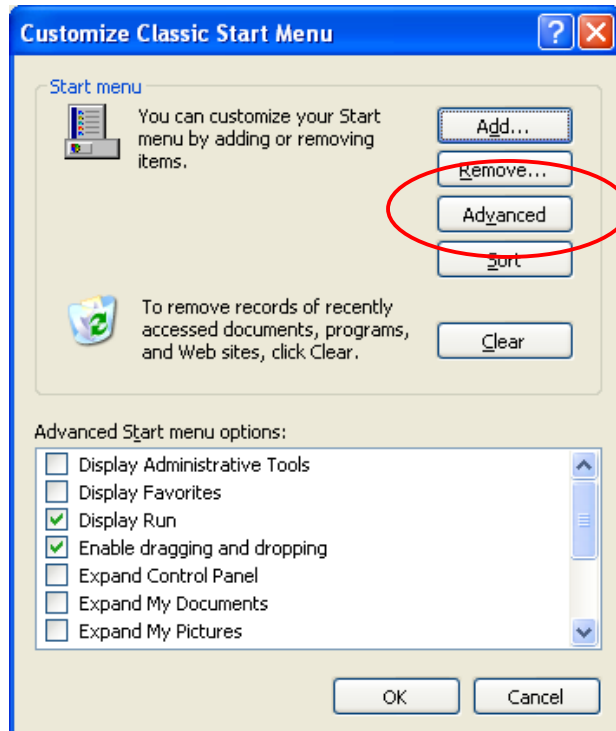


Taskbar and
Start Menu

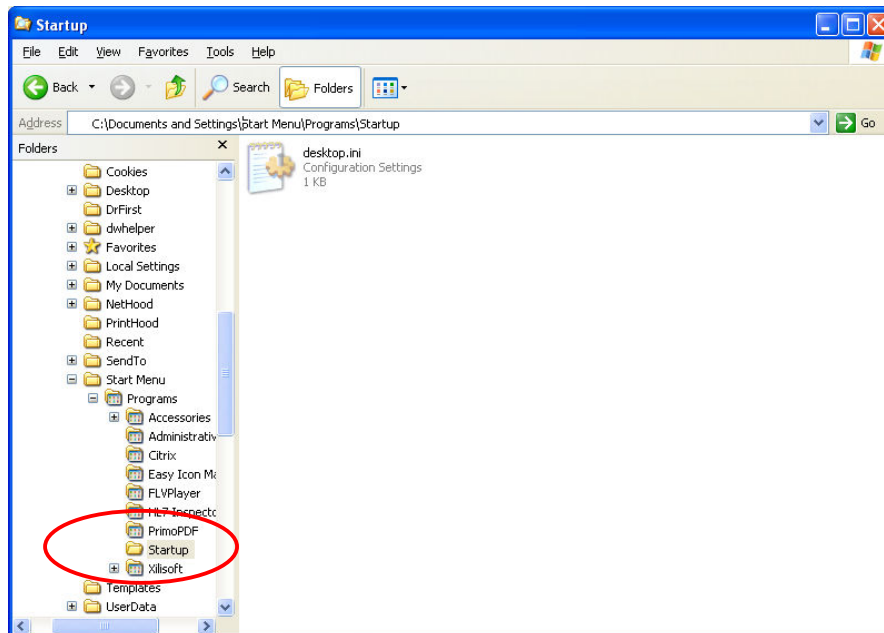
You will want to choose the “Classic” Menu.



From the Classic Menu, choose Customize and then choose Advanced from this screen.



You will be taken to a Windows Explorer window like below. You will need to look in the Start Menu for the StartUp folder and double-click it.



Please leave this window open and with a new window browse to the folder where your eMedReceiver program was installed. In most cases, this will be *C:\Program Files\EMed\EMedReceiverCrypto*. Select the eMedReceiverCrypto.exe file and drag it into the Start Up folder. This will leave you with a shortcut similar to the one pictured below. The next time your computer is restarted, eMedReceiver will automatically start.

